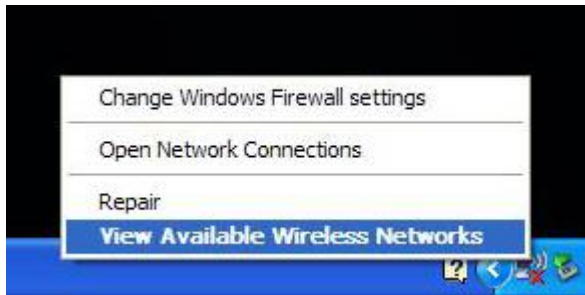


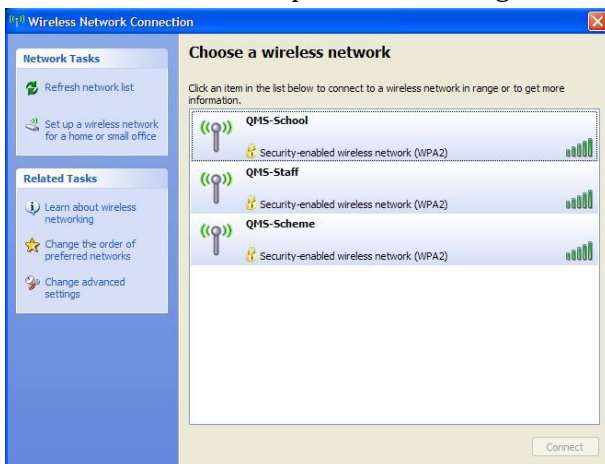
Connecting a Windows XP Device to the Wireless Network

These steps show how to connect a Windows XP device to the school's wireless network.

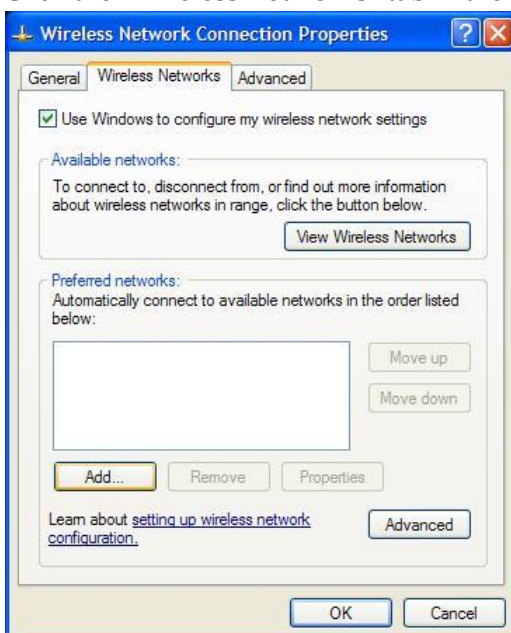
1. With your Wi-Fi turned on, right click on the wireless icon in the task bar and choose "View Available Wireless Networks"



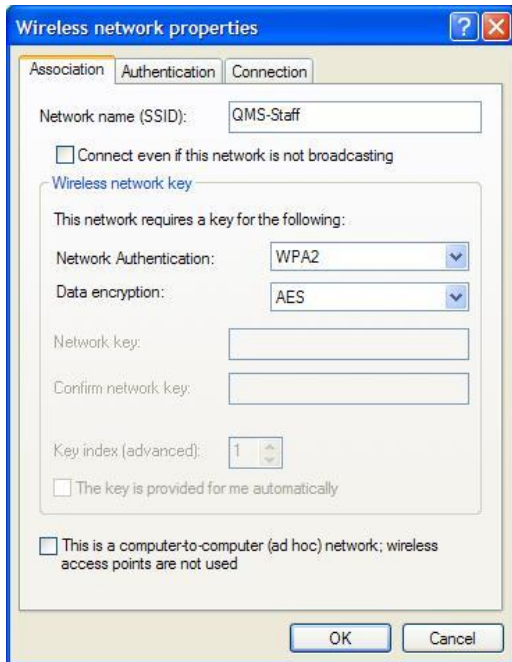
2. In the window which opens click "Change Advanced Settings"



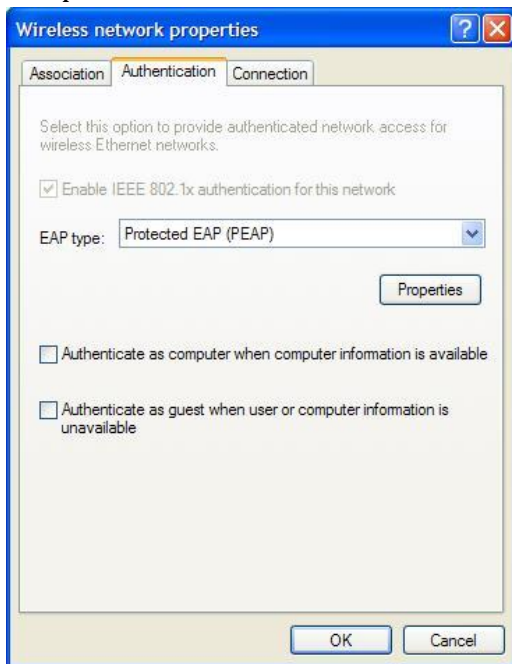
3. Click the "Wireless Networks" tab in the window which opens and click the "Add" button



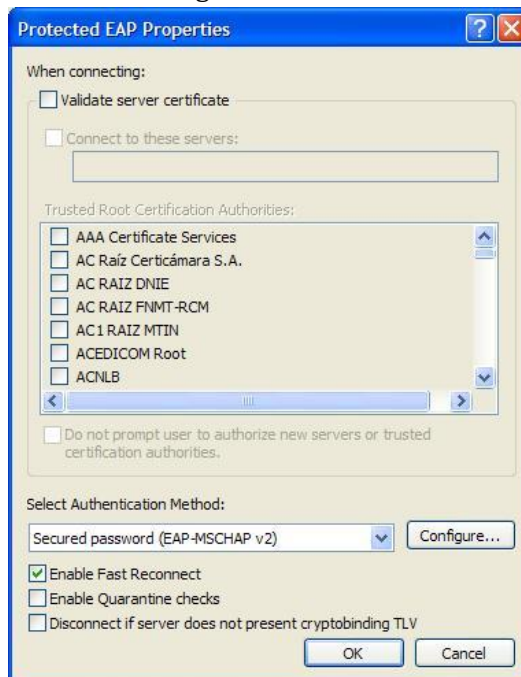
4. In the window which opens enter the settings as displayed entering “QM-BYOD” for your Network name. Ensure all the other settings match the picture below.



5. Click the “Authentication” tab and change the “EAP Type” drop-down to “Protected EAP (PEAP)” and deselect the “Authenticate as computer...” check-box. Now click the “Properties” button



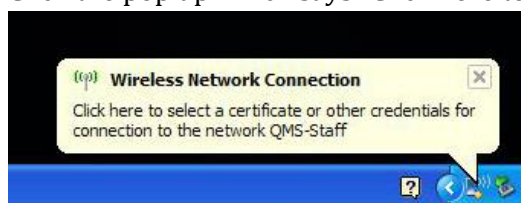
6. In the window which opens, deselect the “Validate server certificate” check-box and click the “Configure” button



7. Deselect the “Automatically use my Windows logon name...” check-box and click “OK”



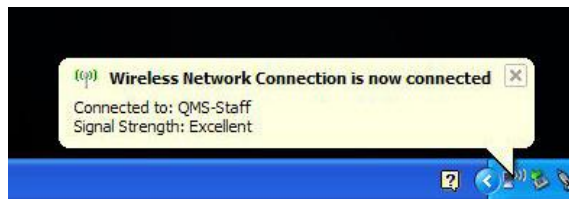
8. Click “OK” three times
9. Click the pop up which says “Click here to select a certificate...”



10. In the window which opens, enter your network username and password and click “OK”



11. You should now connect to the wireless network



When you change your school network password, you will need to also change the password with which you are connecting to the wireless network with in step 10