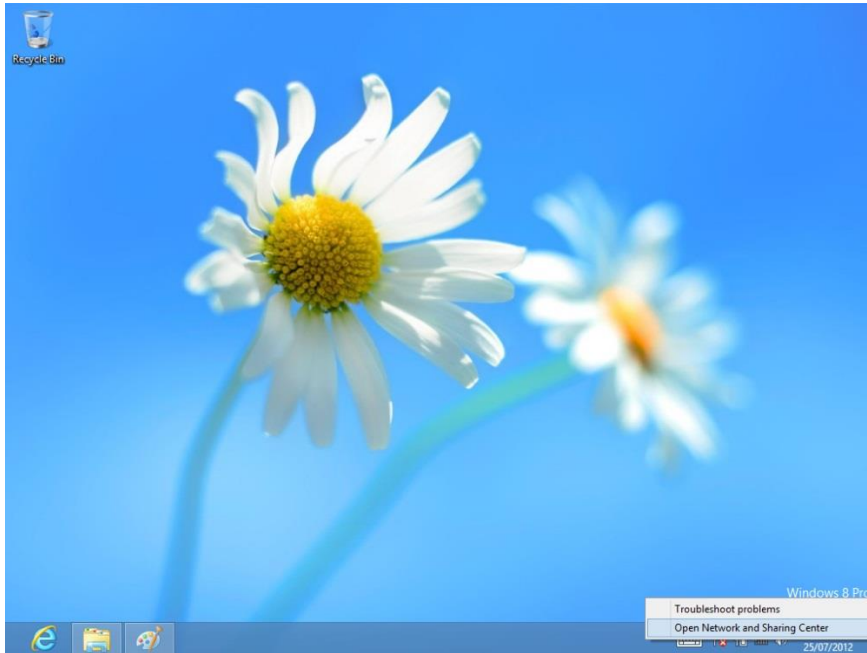
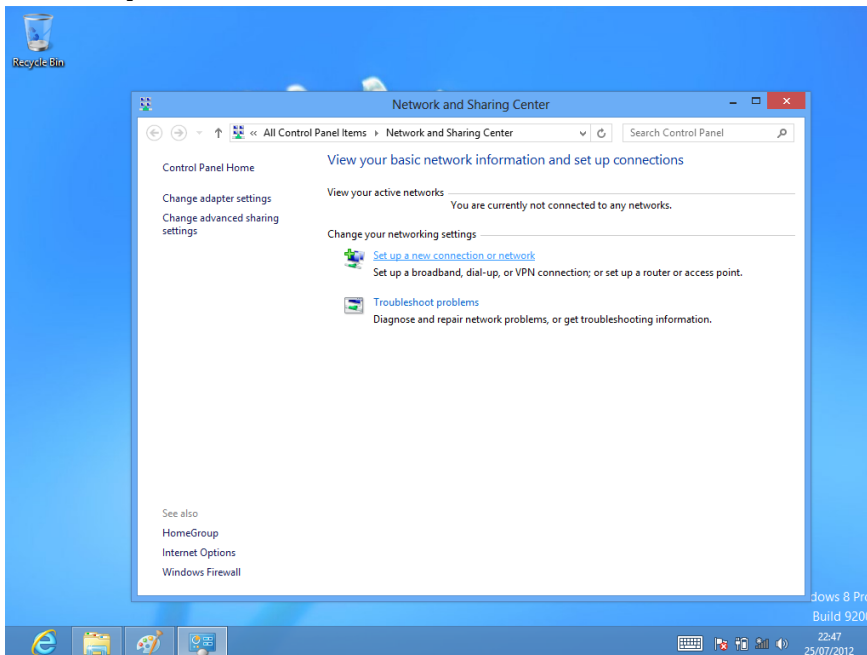


Connecting a Windows 8 Device to the Wireless Network

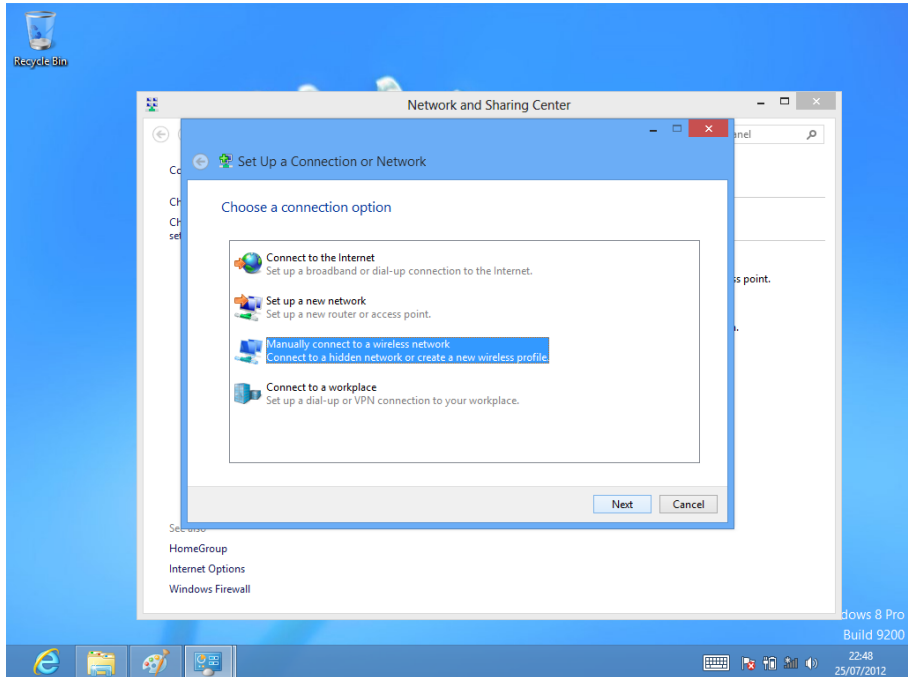
1. Click the tile to go to your desktop
2. Ensuring Wi-Fi is enabled, right-click the Wi-Fi connections icon and open the network and sharing centre.



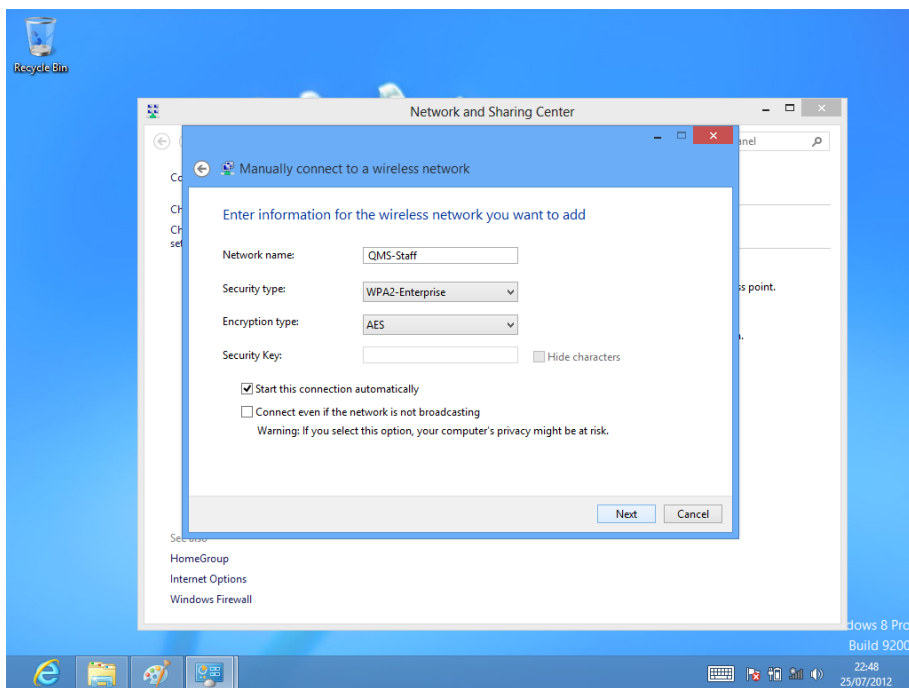
3. Click setup a new connection or network



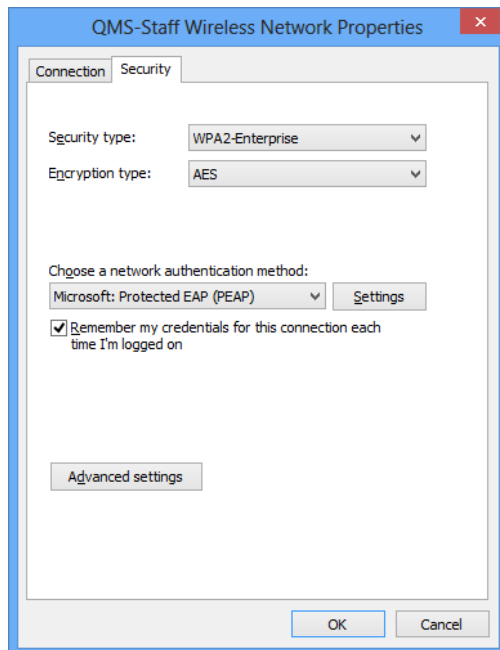
4. Click manually connect to a wireless network and click next



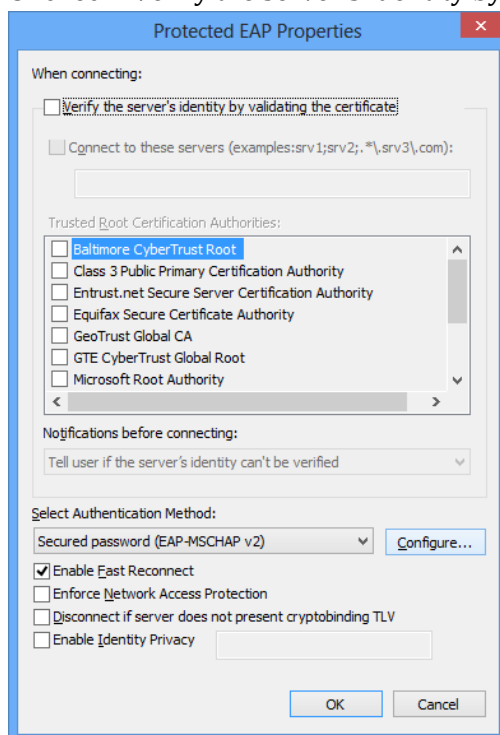
5. Type network name of "QM-BYOD" and set the "Security Type" to "WPA2 Enterprise" and the click "Next"



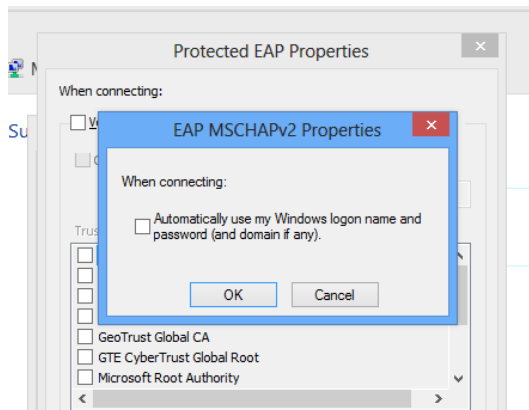
- Click “Change connection settings” and in the window which opens click the “Security” tab



- Click “Settings”
- Uncheck “Verify the server’s identity by validating the certificate.”

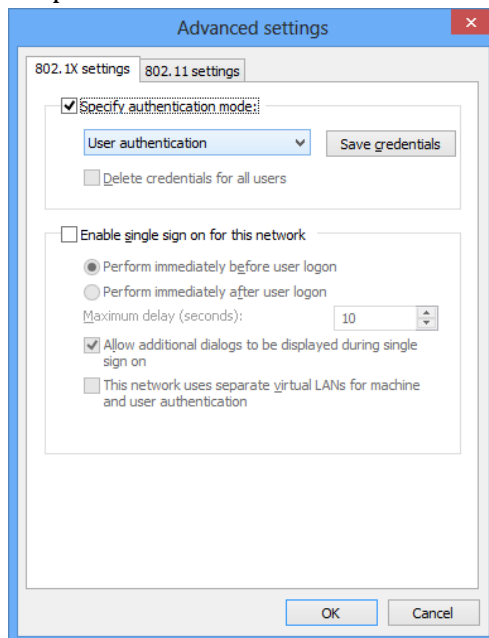


9. Click configure and ensure that “Automatically use my Windows logon name...” is unchecked then click “OK” twice



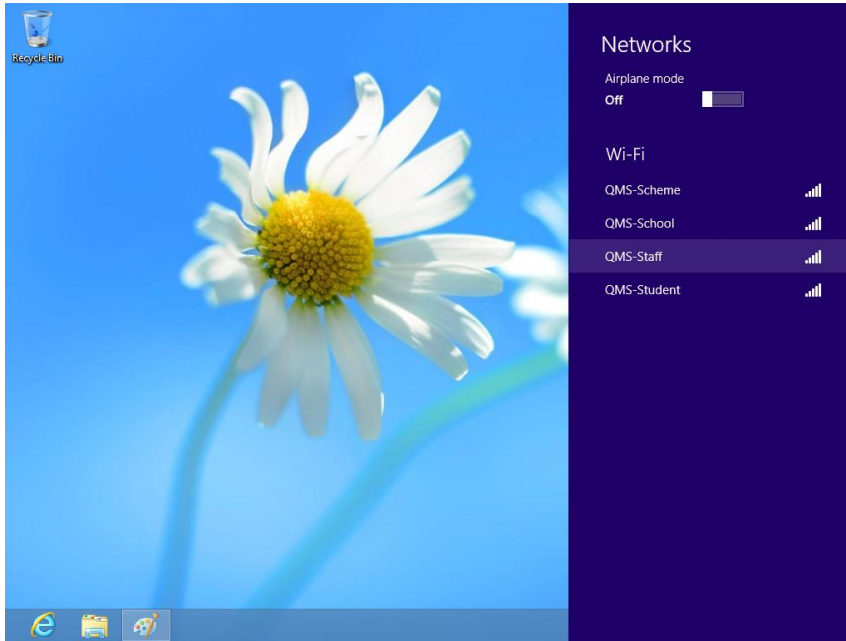
10. Now click advanced settings

11. Check “Specify authentication mode:” and choose “User authentication” from the dropdown.

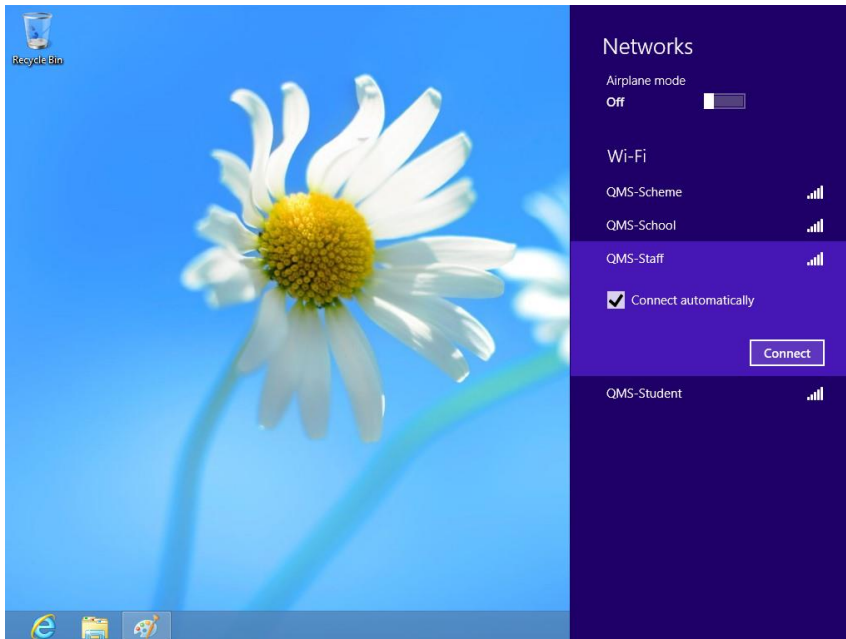


12. Click “OK” twice and then click “Close” to finish adding the network

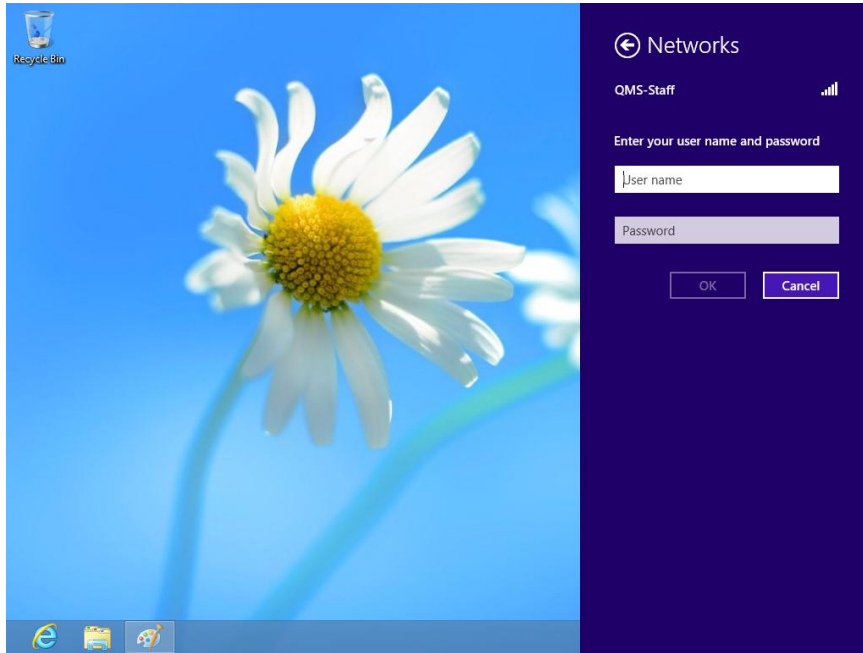
13. Left click the Wi-Fi icon to show available networks



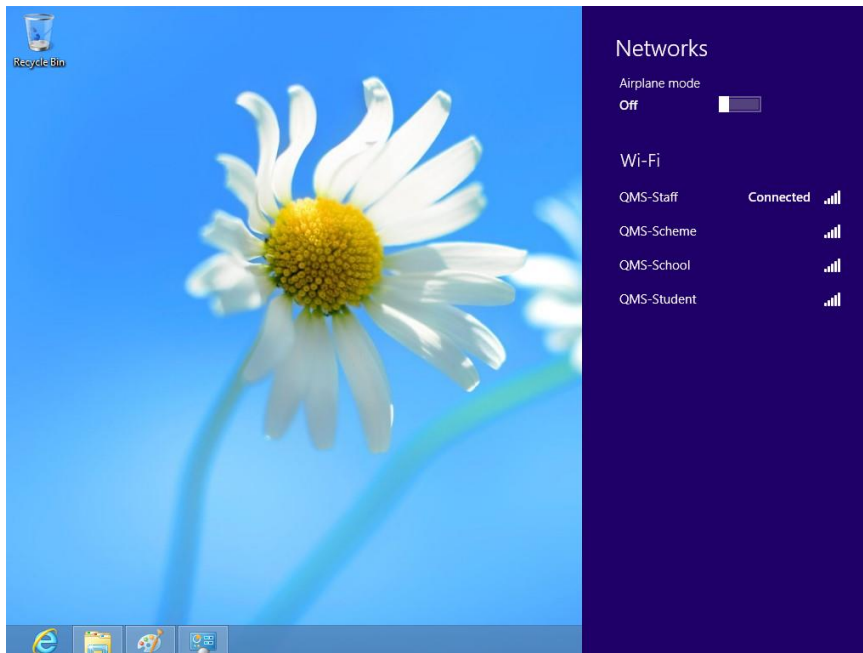
14. Left click the Wi-Fi connection you added in step 5 and click connect



15. Enter your school network username and password when prompted and click ok



16. You should now be connected to the wireless network.



When you change your school network password, you will need to also change the password with which you are connecting to the wireless network with in step 15.