

Connecting a Windows 7 Device to the Wireless Network

These steps show how to connect a Windows 7 device to the school's wireless network.

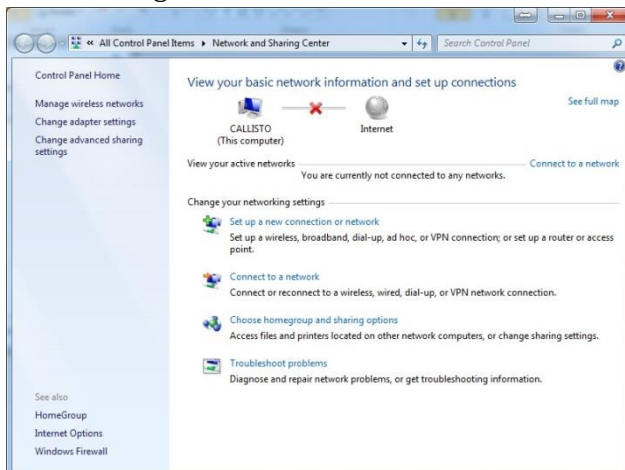
1. With your Wi-Fi turned on, left click on the "Connections are available" icon in the task bar.



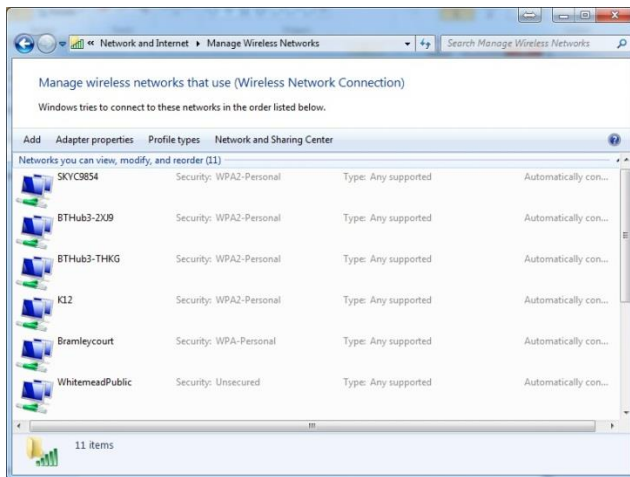
2. Click "Open Network and Sharing Center" in the window which opens



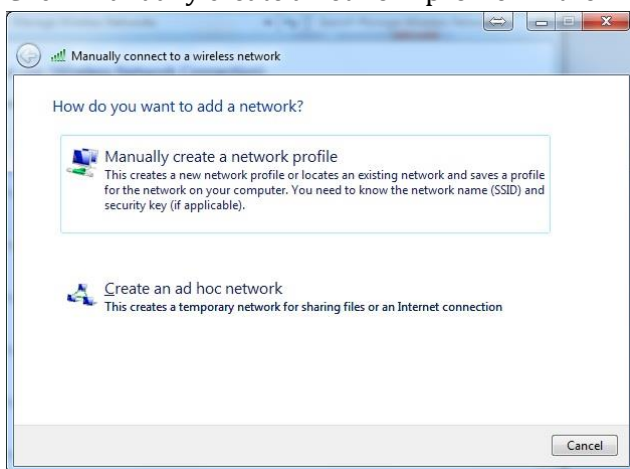
3. Click "Manage Wireless Networks" in the window which opens



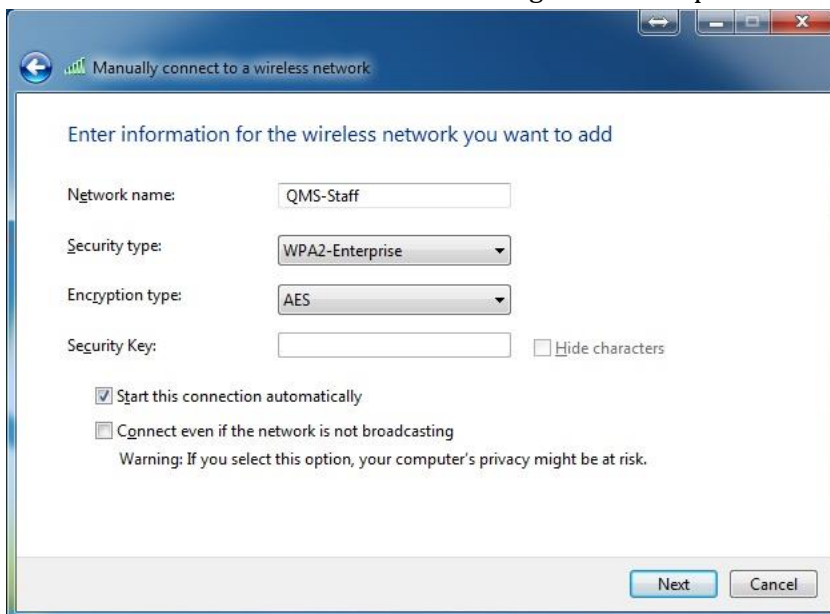
4. Click "Add" in the window which opens



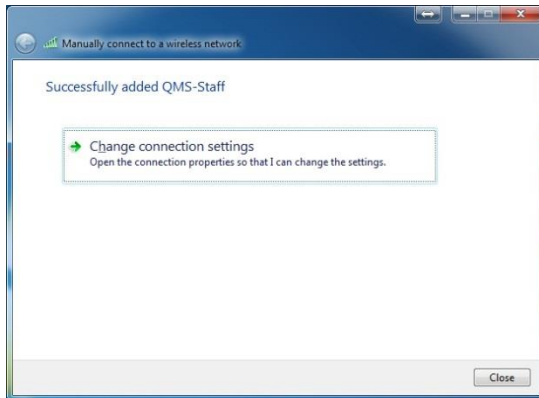
5. Click “Manually create a network profile” in the window which opens



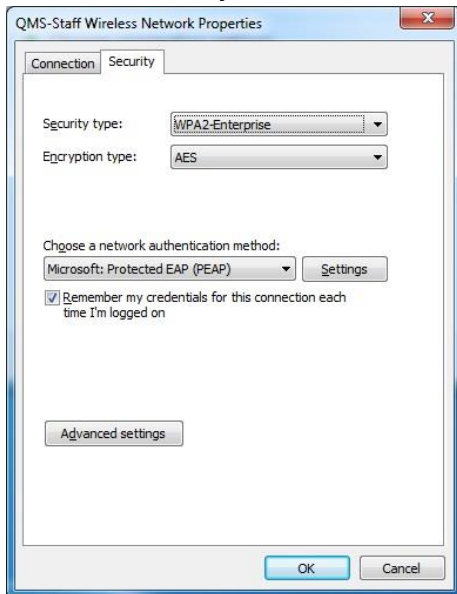
6. In the window which opens enter the settings as displayed entering “QM-BYOD” for the Network name. Ensure all the other settings match the picture below. Click “Next”



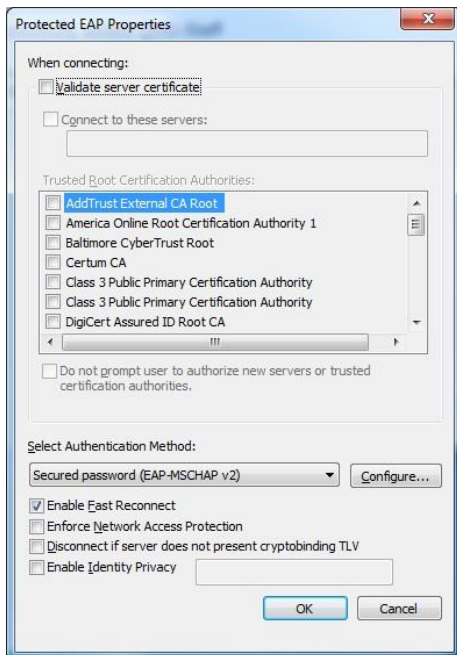
7. Click “Change connection settings”



8. Click the “Security” tab of the window which opens and click the “Settings” button



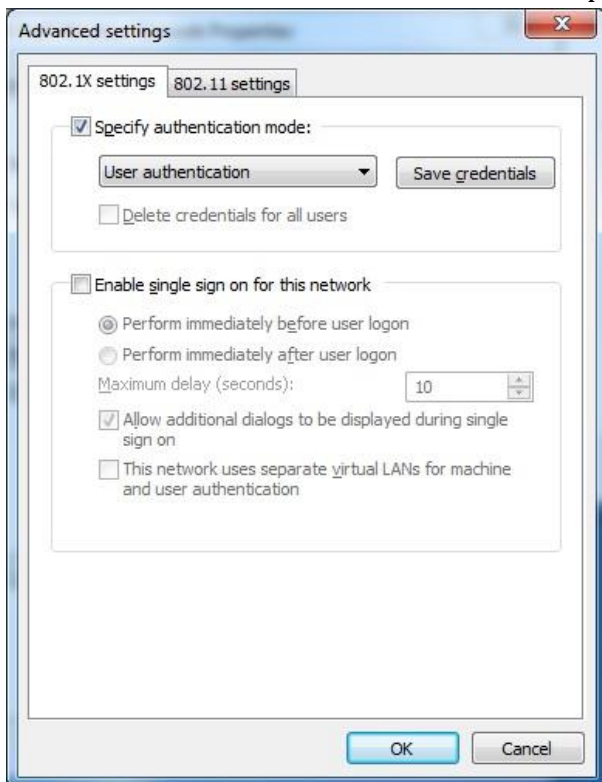
9. Deselect the “Validate server certificate” check-box and click the “Configure” button



10. Deselect the “Automatically use my Windows logon name...” check-box and click “OK”

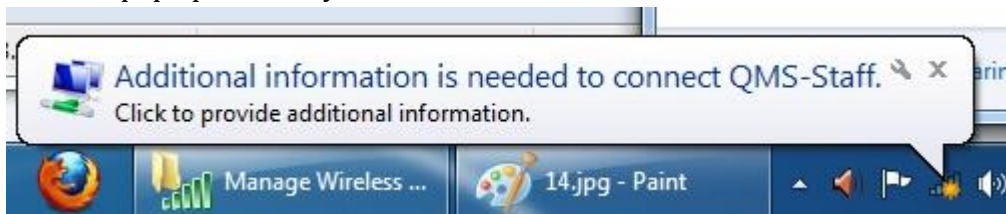


11. Click “OK” again and then click “Advanced settings”. Tick “Specify authentication mode” and choose “User authentication” from the drop down. Click “OK”



12. Click “OK” and then “Close” to close the window

13. Click the pop up which says “Additional information is needed to connect ...”



14. In the window which opens, enter your network username and password and click “OK”



15. You should now connect to the wireless network

When you change your school network password, you will need to also change the password with which you are connecting to the wireless network with in step 14